



ModernLiving Interiors



+91 9113206654
+91 9113206615



info@modernlivinginterior.com



#60, 3rd Floor, Double Road
Indiranagar, Bangalore,
Karnataka - 560038

Modern Living Interiors is all about bringing you the latest in interior design solutions. With our expertise and experience, your residential and commercial spaces will adorn a look that is nothing less than exceptional. We stand apart owing to the systematic and professional methodology that we employ while approaching a project along with our unmatched experience of delivering the many projects across India.

At 'Modern Living Interiors' we achieve a perfect amalgam of design, beauty, functionality, and practicality for you. This keeps your spaces looking chic and inspiring.

Having separate teams for designing traditional Indian and modern Western interiors helps our clients get the best of what they seek. We also do a flawless combination of traditional and Western design to give you the best of both worlds.

The materials and skills that we employ in designing interiors deliver superb finish, classy look, and quality within your budget!

About Us

We are an interior designing firm delivering the best-looking and comfortable to live residential & commercial spaces. We undertake interior design projects on a turn-key basis offering end-to-end solutions.

Owing to our experienced team of professionals, usage of modern technology and materials, and commitment to serving the best to our clients, we have always met expectations and delivered all the projects within the committed time frame.

Based out of Bengaluru, we have a presence across the country. Our team of professionals comprises Interior Designers, Architects, Software experts, Electricians, Carpenters, Painters, Roofing and tiling experts, laborers, etc.

3 BHK GOLD PACKAGE (4,29,999/-)

TV UNIT (6'0"L X7'0"H)

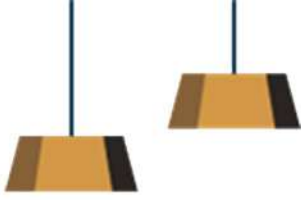
- **Commercial Ply 303 Grade.**
- **18mm Commercial Ply.**
- **Moisture Resistant Ply.**
- **Termite Proof.**
- **External Laminate 1mm Hi-Glossy Finish.**
- **Internal Laminate 0.8mm Off White.**



POOJA UNIT (3'0" L X 4'0" H)

- Commercial Ply 303 Grade.
- 18mm Commercial Ply.
- Moisture Resistant Ply.
- Termite Proof.
- External Laminate 1mm Glossy Finish.
- Internal Laminate 0.8mm Off White.
- HAFELE Accessories and Fittings.

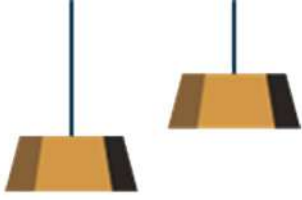




KITCHEN BASE UNIT (9'2" LX 2'8" H)

- **Boiling Water-Resistant Ply 710 Grade.**
 - **18 mm BWP PLY.**
 - **Termite Proof, Moisture Resistant Ply.**
 - **External Laminate 1mm Hi-Glossy Finish.**
 - **Internal Laminate 0.8mm Off White.**
 - **HAFELE Accessories , Fittings and Handles.**
- 1 Plain -Thali Unit**
2 No. Tandem Box
1 No. Bottle Pull -Out
1 Cutlery Unit

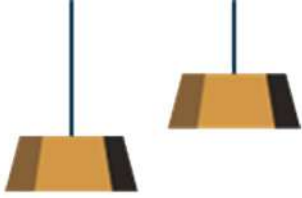




KITCHEN WALL UNIT (9'2" LX 2'0" H)

- **Commercial Ply 303 Grade.**
- **18 mm Commercial PLY.**
- **Termite Proof, Moisture Resistant Ply.**
- **External Laminate 1mm Hi-Glossy Finish.**
- **Internal Laminate 0.8mm Off White.**
- **HAFELE Accessories , Fittings and Handles.**
- **2 Hydraulic Lift with Plain Glass**





KITCHEN ACCESSORIES

➤ **HAFELE Accessories , Fittings and Handles.**

➤ **1 Plain -Thali Unit**

➤ **2 No. Tandem Box**

➤ **1 No. Bottle Pull -Out.**

➤ **1 Cutlery Unit.**

➤ **2 Hydraulic Lift with Plain Glass.**



BOTTLE PULL OUT



HYDRAULIC LIFT



TANDEM BOX



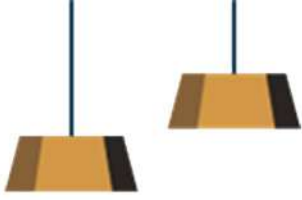
CUTLERY UNIT



PLAIN THALI UNIT



HANDLES



**ModernLiving
Interiors**

MASTER BEDROOM WARDROBE (7'6" L X 7'0" H) WITH LOFT (7'6" L X 2'2" H)

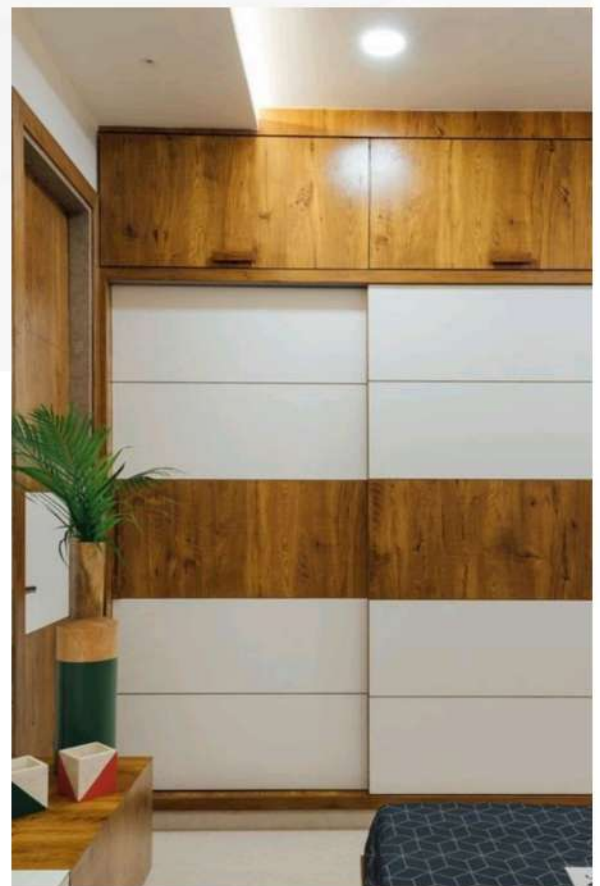
- **Sliding Wardrobe with Openable Loft Frame Shutter.**
- **Commercial Ply 303 Grade.**
- **18 mm Commercial Ply.**
- **Moisture Resistant Ply.**
- **Termite Proof.**
- **External Laminate 1mm Hi-Glossy Finish.**
- **Internal Laminate 0.8mm Off White.**
- **HAFELE Accessories and Fittings.**





BEDROOM-1 WARDROBE (7'6" L X 7'0" H) WITH LOFT (7'6" L X 2'2" H)

- Sliding Wardrobe with Openable Loft Frame Shutter.
- Commercial Ply 303 Grade.
- 18 mm Commercial Ply.
- Moisture Resistant Ply. Termite Proof.
- External Laminate 1mm Hi-Glossy Finish.
- Internal Laminate 0.8mm Off White.
- HAFELE Accessories and Fittings.

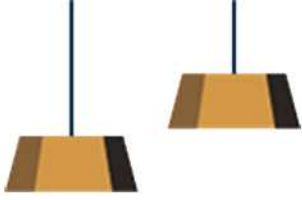




BEDROOM-2 WARDROBE (7'6" L X 7'0" H)

- Sliding Wardrobe
- Commercial Ply 303 Grade.
- 18 mm Commercial Ply.
- Moisture Resistant Ply.
- Termite Proof.
- External Laminate 1mm Hi-Glossy Finish.
- Internal Laminate 0.8mm Off White.
- HAFELE Accessories and Fittings.





STUDY CABINET(3'6" L X 2'6" H)

- **Commercial Ply 303 Grade.**
- **18 mm Commercial Ply.**
- **Moisture Resistant Ply.**
- **Termite Proof.**
- **External Laminate 1mm Glossy Finish.**
- **Internal Laminate 0.8mm Off White.**
- **HAFELE Accessories and Fittings.**



Sorry!!!!



SHOE RACK WITH CUSHION (3'0" L X 2'0" H)

- **Commercial Ply 303 Grade.**
- **18 mm Commercial Ply.**
- **Moisture Resistant Ply.**
- **Termite Proof.**
- **External Laminate 1mm Glossy Finish.**
- **Internal Laminate 0.8mm Off White.**
- **HAFELE Accessories and Fittings.**





www.modernlivinginterior.com



+91 9113206654
+91 9113206615



info@modernlivinginterior.com



#60, 3rd Floor, Double Road
Indiranagar, Bangalore,
Karnataka - 560038